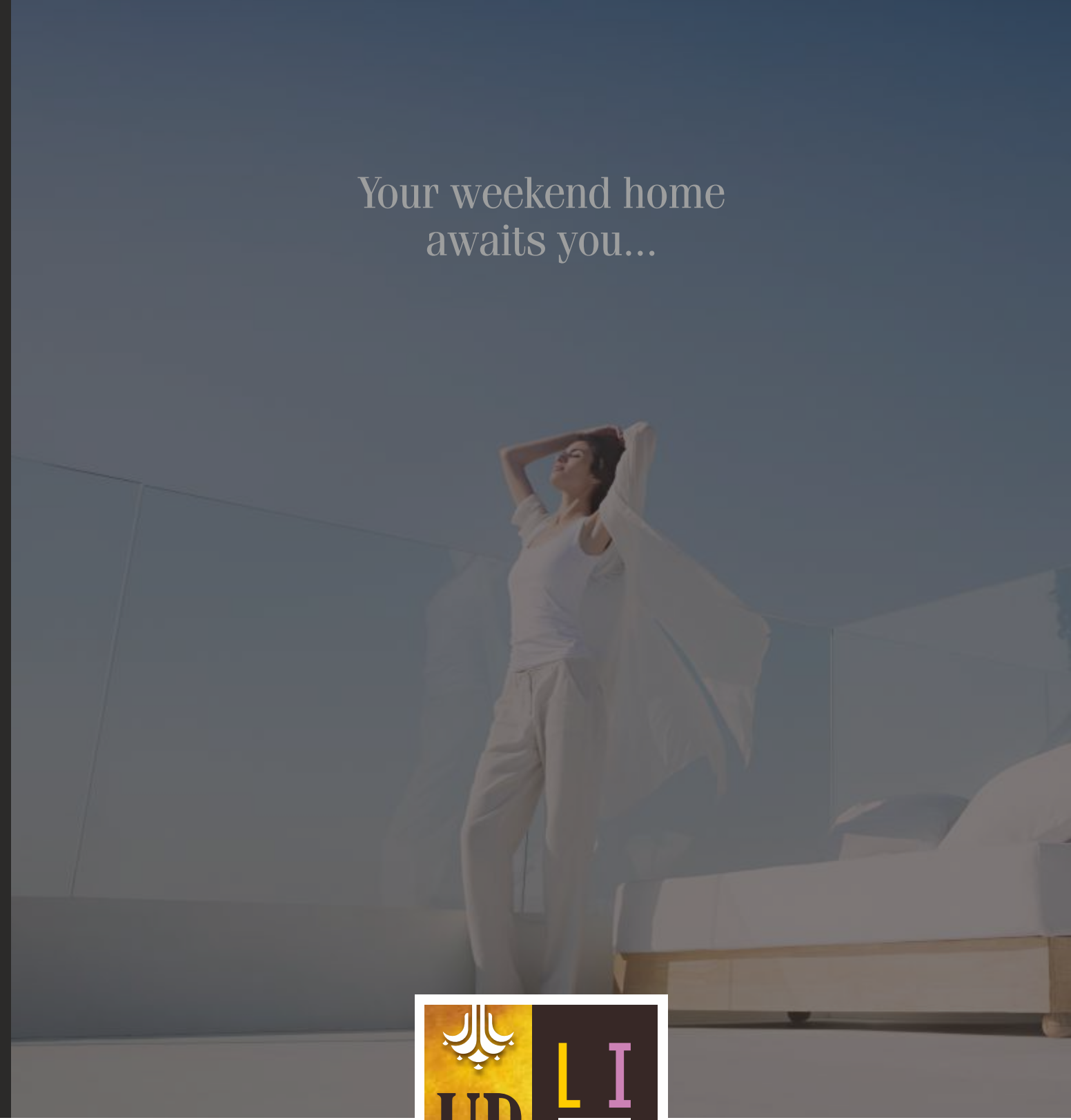


Your weekend home
awaits you...



Credits

ARCHITECT CONSULTANT
Prakash Chandak (Arch Type)

RCC CONSULTANT
Parag Chopda (Spectrum)

LANDSCAPE ARCHITECTS
Mahesh Nampurkar (Suman Shilp)

LIASONING ARCHITECT
Shailesh Dandane (Spiro)

LEGAL CONSULTANT
Adv. Manisha Kasture



For more details visit our website
or contact us

7847 044 044

www.avioenterprises.com

MAHA RERA NO.
P52100023652
<https://maharera.mahaonline.gov.in>

Member
CREDAI
PUNE METRO

GAZIBO
VENTURES LLP

A Project by

AVIOR
SCALING NEW HEIGHTS

**3 & 2 BHK DUPLEX
VILLAMENTS**

Urawade, Pirangut

Site: Gat No. 431, Mont Vert Vesta Drive,
Urawade, Pirangut, Pune 412108

Office: Avior Enterprises, Block-B, DS 4-5,
Sitaram Aabaji Bibwe Path, Bibwewadi, Pune - 37

Poora Hafta
Chill...!!



Every moment full of life at Uplife

Welcome to the exquisite world of Uplife designed and developed by Avior Enterprises in association with Gazibo Vetures LLP. Avior Enterprises is a well diversified business group from Pune and an emerging powerhouse in the realty sector. Spend the most enchanting moments at these weekend homes at Urawade - Pirangut, near Pune, that transcends you to the dream world full of natural beauty. Own your exclusive villament to spend the most energetic weekend time.

A unique place for the people with refined taste

Uplife offers the best investment opportunity to the NRIs and domestic investors, who have high regard for India's socio-cultural values. UP LIFE brings on platter, 2 & 3 BHK Duplex villaments, on the scenic landscape covering 7.5 acres. Be the part of the most exciting environs that reflect class, culture and comfort.



Actual Site Photo



Actual Site Photo



Actual Site Photo

You've weekend dreams, we've dream weekends

Indulge into your own dream world that is serene yet vibrant. Let your hair down and get absorbed in the pristine, unsullied environs of UP LIFE weekend homes, exclusively crafted for you.

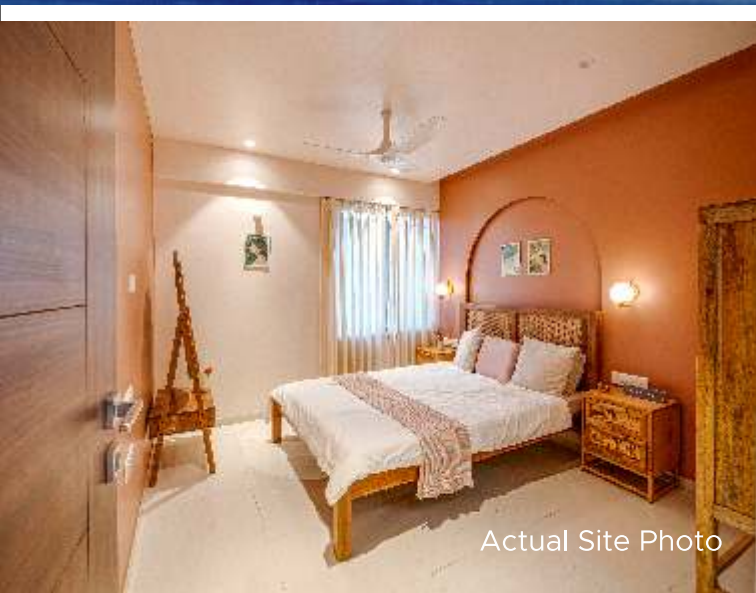
Enjoy time with your family and friends. Explore some crazy things that you seldom do, in your hectic city life. Spend hours on end to listen the most lively music of nature.



Actual Site Photo



Actual Site Photo



Actual Site Photo



Actual Site Photo

Unfolding the structural marvel

UPLIFE is an impeccable mélange of aesthetically rich villaments offering the modern-age amenities and opulence amidst pleasant natural surroundings. These specially crafted weekend homes, promise an exciting and enriching experience. You can pursue many passions and hobbies such as sketching, cycling, photography, reading, meditation, sit relaxed or simply take a sojourn in the idyllic surroundings to refresh your mood.

The picturesque and blissful environs of UP LIFE offer the perfect destination for family get-togethers and party moments with the friends. You have plenty of opportunities to celebrate and enjoy at this divinely gifted spot.



Actual Site Photo



About Pirangut

Pirangut is one of the most thriving suburbs in the Western parts of Pune. It enjoys quick connectivity with Pune city and also facilitates easy access to NH48. On the western side it is in close proximity to the Lavasa project. Over the years it has witnessed significant industrialization and modernisation. India's most prominent IT Hub at Hinjewadi is very much in the neighbourhood and that's why Pirangut enjoys the most vantage position.



Actual Site Photo



Actual Site Photo

Give a rhyme and rhythm to your life

Welcome to the exquisite world of UP LIFE designed and developed by Avior Enterprises in association with Gazibo Vetures LLP. Spend the most enchanting moments at these weekend homes at Urawade - Pirangut, near Pune, that transcend you to the dream world full of natural beauty. Own your exclusive villament to spend the most energetic weekend time. You'd be perfectly in sync with your soul at this splendid resource of pure natural energy.

Avior Enterprises is a well diversified business group from Pune and emerging powerhouse in the realty sector.



Actual Site Photo

Amenities



Swimming Pool with Separate Children's Pool



Mini Theatre



Landscaped Courtyard (with seating)



Concierge Service with 24*7 assistance at Reception



Children's Play Area



State of the Art Security System



Raised Party Lawn



Multipurpose Sports Court



Senior Citizen Plaza



Multipurpose Club House



Open Gym



Yoga Deck



Landscape Green Spaces



Gazebos / Patios



Semi-covered Pergola (with seating)

2 BHK
Duplex Villament



Artistic impression

3 BHK
Duplex Villament



Artistic impression



Actual Site Photo



Actual Site Photo



Actual Site Photo



Actual Site Photo



Layout Plan



Location Map

Not to scale

Project Highlights

- ▶ The epicentre of connectivity - easy accessibility with multiple routes to hinjewadi it park
- ▶ Connecting to the ring road in just 5 min
- ▶ Well connected to national and state highway
- ▶ Double height living room
- ▶ Vehicle free amenity area
- ▶ Weekend adventure and trekking
- ▶ Natural light all around
- ▶ Every sq.ft ensures max. light, ventilation .
- ▶ Private attached terrace
- ▶ Ample of green spaces all around
- ▶ Close to mulshi dam and lavasa
- ▶ Better aqi index- cleaner air, cooler temperature
- ▶ Uninterrupted views of sahyadri hills
- ▶ Avior Uplife is truly the gateway to a great

Weekend Destinations
From Uplife

Pawana Dam
30 mins

Lawasa City
40 mins

Hinjewadi IT Park
15 mins

Chinmaya Vibhooti
12 mins

Tamhini Ghat
30 mins

Palase Waterfall
20 mins